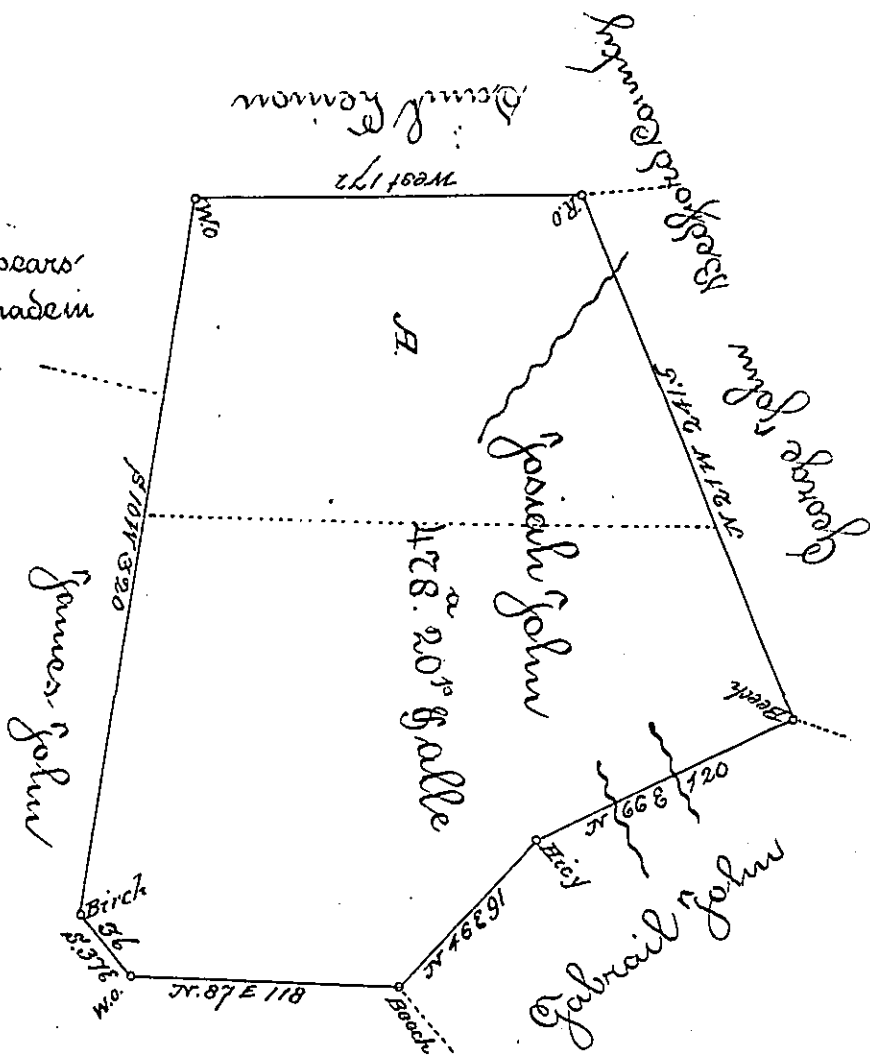


Note. The piece marked A appears to have been covered by a survey made in pursuance of Warrant in the name of James Kerneir -

Wm O'Keefe
19.5



Situate on the summit of Alleghany Mountain on the waters of Cone-
maugh formerly Bedford next Somerset and now Cambria County Dum-
merhill Top Surveyed in 1794 in pursuance of a warrant granted to Jo-
siah John dated March 12th 1794 cont^d 478² - 20¹/₂ and resurveyed and exam-
ined the 2^d day of Sept: 1830 by

Jacob Spangler Esq^r }
Surveyor General }

Wm O'Keefe
19.5

IN TESTIMONY that the above is a copy of the original remaining on file in the
Department of Internal Affairs of Pennsylvania, made con-
formably to an Act of Assembly approved the 16th day of
February, 1833. I have hereunto set my Hand and caused
the Seal of said Department to be affixed at Harrisburg, this

Seventh day of January 1896-

James W. Latta
Secretary of Internal Affairs.